

Baxter

**Inspire Me
Empower Me
Support Me
Invest in Me**

CARING ABOUT YOUR **SUCCESS**

BCCI
Baxter Critical Care Institute



Baxter Critical Care Institute

Baxter Critical Care Institute (BCCI), your education partner for Acute Kidney Injury (AKI) Management and Organ Support Therapies, providing critical care professionals with a range of specialist-tailored resources to...

empower

An icon representing empowerment, showing a stylized human figure with arms raised and a sunburst above its head.

support

An icon representing support, showing two hands clasped together in a supportive grip.

inspire

An icon representing inspiration, showing a human head profile with a glowing lightbulb inside.

invest

An icon representing investment, showing a hand holding a small plant with a single leaf.

...in their learning and development.

Inspire Me

...by providing specialized training that encourages learning.

**on-demand
learning**

**virtual
reality**

**face
to face**



**tailored
training**

- **Tailored training** helps maximize learning with hands-on device training and preparation for real-world problem-solving.
- **Virtual Reality (VR)** training for hands-on experience at any time and place that suits the needs of your staff.
- Training content is regularly updated and can be delivered in a variety of ways, including **face-to-face** and **on-demand learning**.

Empower Me

...by promoting equitable learning that helps meet individual professional goals.

**relevant
content**

**bitesized
learning**



**multiple
platforms**

**quality
improvement
programs**

- Easily accessible content available on **multiple platforms**.
- **Bitesized learning** that is intuitive to use and easy to navigate.
- **Relevant and specialized** learning focused on both theoretical and practical knowledge that can be completed at a time to suit your schedule.
- Work with our team of clinical specialists to develop data driven CRRT **quality improvement programs** that align with your hospital's performance goals.

Invest in Me

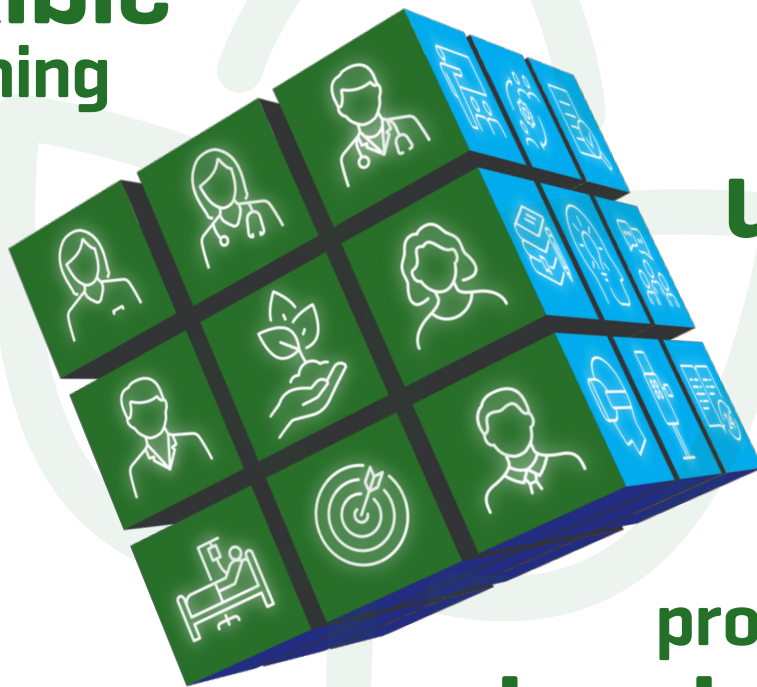


...with professional development and learning opportunities that help support you in delivering treatments with confidence.

**flexible
learning**

**track
usage**

24/7



**professional
development**

- Offer your team **professional development** opportunities with specialist resources that can support users with education and training for every experience level.
- Manage, access, **track usage** and performance of all education and training modules, including VR training for Prisma, through the BCCI On-Demand Learning Hub.
- **Flexible learning** opportunities that are available **24/7** and can be delivered at a time and place to suit you.

Want to learn how BCCI can inspire, empower, support and invest in you?
Please visit emeabcci.baxter.com or contact your local Baxter representative.

PrisMax/PrismaLung+

CE 0123

Contact your local representative today regarding pricing and availability.
Please note the virtual reality tool for the Prisma system is for training purposes only and does not replace the Instructions for Use (IFU)

Baxter and Prisma are registered trademarks of Baxter International Inc.
EMA-AT00-220033

CARING ABOUT YOUR **SUCCESS**



Baxter Critical Care Institute

emeabcci.baxter.com